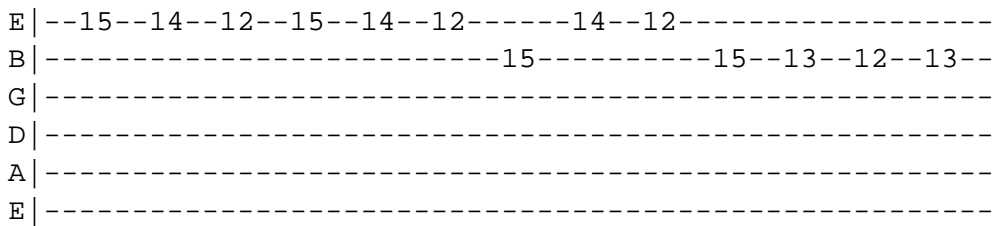
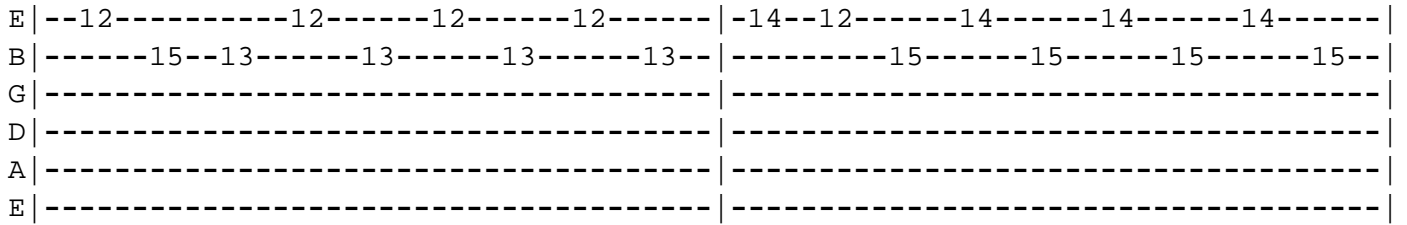


Why Do You Feel So Down?

Declan McKenna

[Intro]



C D
 I can't speak and I can't listen
 C
 And everyone is a curse or something worse

What can I say to the kid that made you
 D
 Complaining like you were made to
 Em D C
 When you hate every god I pray to

C
 So don't lie to me
 D G Bm
 I know I'm not as cool as I'd like to be

D C
 But why do you feel so down, again?
 D G Bm
 I know I'm not a very good friend
 D C
 Why do you feel so down?

D G Bm
 Sure, that's not something I'd stick around for
 D C
 Why do you feel so down?

D G Bm
 Oh God, I know you think I'm safe and sound, I'm not
 D C D C
 Why do you feel so down?

C D Em

I ve gone weak and I m sick of speakin

G

So hear me out you re the cure or something more

C

D

I think you re one of a kind so I ll never like myself

Em

G

I think you re older and wiser so I won t let you tell

C

D

I think it over and over and hope you re thinking too

Em

G

I think it over and over and hope I m over you

C

So don t lie to me

D

G

Bm

I know I m not as cool as I try to be

D

C

But why do you feel so down, again?

D

G

Bm

I know I m not a very good friend

D

C

Why do you feel so down?

D

G

Bm

I m sure, that s not something I d stick around for

D

C

Why do you feel so down?

D

G

Bm

Oh God, I know you think I m safe and sound, I m not

D

C

Why do you feel so down?

C D Em G D

Ooh, everyone, I messed up again

C D Em G D

Ooh, everyone, I messed up again ohh

C D Em G D

Ooh, everyone, I messed up again

C D Em G D

Oh, everyone

C D Em D C Bm

Oooooohhh

C

So don t lie to me

D

G

Bm

I know I m not as cool as I try to be

D

C

But why do you feel so down, again?

D

G

Bm

I know I m not a very good friend

D

C

Why do you feel so down?

D

G

Bm

Sure, that s not something I d stick around for

D C

Why do you feel so down?

D

G

Bm

Oh God, I know you think I m safe and sound, I m not

D C D

Why do you feel so down?

Em

G

D

Why do you feel so down?